



In Vehicle Monitoring System (IVMS)

It's time for Real Time

Bahwan CyberTek and
GeoDecisions present the
Next Generation In Vehicle
Monitoring System (IVMS)
that will transform the way
you work.

Our Focus

These days each logistics company has different goals and objectives, however all companies share the overriding desire to improve the quality and safety of their transportation infrastructures. This calls for a robust system that can help companies to monitor and communicate with their vehicles in real time.

To address these real time needs, Bahwan CyberTek (BCT) and GeoDecisions (GEO) have partnered to provide the next generation In Vehicle Monitoring System (IVMS) to enhance the existing vehicle operations and to make tracking simpler, effective and accurate than never before



Safety The group is very intent on increasing customer employees and business partner's ability to function in as safe an environment as possible. In addition, today Organizations are looking for ways to react with the best efficiency in the event of an incident. The use of a Geospatial Automatic Vehicle Location (AVL) tracking system will allow them to see all of their vehicles and their business partner's vehicles in a seamless single platform.

Operations Management: The system is based on "Management by Exception" which allows the key people in the organization to spot incidents in real time by alerts, rather than simply looking at dots on the maps or looking at historical data to determine where attention should be paid.

System management: With the system wide Automatic Vehicle Location (AVL) and incident management and alerting system is in front the key people to react to the incident in the best and fastest way possible. The Web Based ARC Logistics suite of products will also allow their process management team to produce almost instant system management tools and reports.

These services would be provided through an Web portal. This makes it accessible from any part of the connected world. The system integrates and displays local infrastructure data, live-vehicle tracking, near-real-time weather, and active route conditions in a map format through a single, secure interface. It is capable of providing information from more than 400 data sets, current data on roads, bridges, tunnels, road conditions, construction, and traffic incidents.

Reports generated can be directly exported to power point, excel or pdf versions for further analysis and to be used to make in-depth analysis.



In Vehicle Display Module



An in vehicle Display module would help in real time Messaging and two way communications between the Driver and the Yard/Office. These display devices can throw up predefine audible messages to the drivers. The drivers can also use this display device to message back to the yard/office. These message can be customized and could be either symbols or in multiple local languages which could be understood by the drivers. These display devices can also navigate drivers to reach the destination. Audible Messages can be configured in Local Languages upon request.

In Vehicle Monitoring System at a Glance

- A Single web Portal interface to monitor and Manage the entire fleet
- Multiple Logins could be defined and access control can be established as defined by customer.
- Each Vehicle can be mapped to a single or a defined number of drivers
- SMS alerts and e-Mail alerts on customer set parameters can be sent to defined number of people
- Flexible to draw Geofence and set alert parameters
- Daily , weekly and Monthly report of vehicle/ Fleet can be pulled at a single click
- In depth Reports on Driver Behavior
- Mapping Levels and details beyond convention system
- Get rid of tracking in Black Spot areas • Customize your reporting tools based on requirements
- An in built vehicle Maintenance Module to facilitate alerts on vehicle services and part changes
- Quality Tracking devices to enable tracking using GPS and GPRS network
- Tracking Devices within built battery to prevent any data loss
- Detailed second to second data in case of an incident
- Mapping reports and in depth reporting tools with alerts on:
 - Over Speeding events
 - Harsh Breaking or Acceleration
 - Detailed Start and Stops
 - Idling Events
 - Seat Belt Status
 - Fuel Consumption
 - Head light Status
 - Complete journey details with speed, stoppages and Idling time
 - And many more...



IRRIS® – The next Generation Tracking Platform

IRRIS® Our Web Portal works symmetrically with patented IRRIS technology platform to provide mapping interface, IRRIS® is an enterprise Web portal that easily integrates operational data from a variety of sources and formats and has the ability to integrate, query, view and overlay data from multiple sources. This interface can receive information from variety of sources about vehicles and assets from satellite or cellular network, log events (such as arrival and departure of vehicles), or RFID tag technology. The location of the vehicle is transmitted and the resulting latitude and longitude coordinates, conditions of vehicles, or alert on non performing vehicles are captured and transmitted to IRRIS® and displayed on a Map.

IRRIS® is a powerful tool to help its users meet the challenge of tracking logistics in real time. It integrates, displays, and overlays critical information about transportation infrastructure information with more than 600 sets of data such as bridges, tunnels, road conditions, as well as an updated on weather conditions. Vehicles real time location is displayed on the Map accurately making this interface ideal. IRRIS® is built on the .NET frame work using GIS solutions from ESRI®

In addition to viewing a vehicles current location and active route conditions, the user also has the ability to profile vehicles and receive alerts on vehicles that fall outside of a certain pre defined and customized condition based on the requirements. For example, users can define a custom 'rule' or event and be notified by e-mail, page, or phone when that 'rule' or event occurs, such as receiving notification if a severe weather event is within a specific location or when an asset deviates from the specified route.

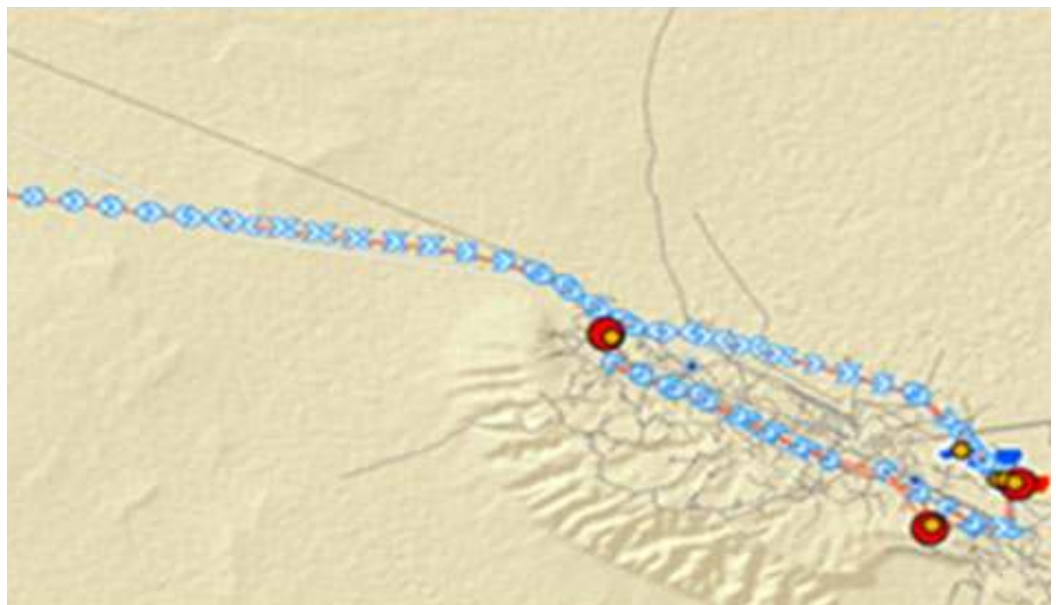


Our Focus

Instead of having to watch thousands of dots on a map depicting moving vehicle the system sends a notification when a moving asset is not performing as defined - saving you time and resources.

ESRI® has more than 1,500 users and 2.5 terabytes of data. It uses the latest Web, geographic information system (GIS), intelligent transportation system (ITS), location-based services (LBS), and GPS and RFID technology to ensure effective logistics, emergency response, and management capabilities.

ESRI® Platform also has Geofencing capabilities, using which the users can easily identify a location, feature or a point and draw geofences around these on the Map. The systems also alerts the users based on the user's definition criteria around these geofences. Alerts could be setup on the portal, This would enable instant messaging and send alerts to identified people on their email ids and SMS to their Mobile with the vehicle details.



Training & Support

Our Tracking Devices Being a privileged partner to the OEM's, we present highly reliable and cost effective tracking device to cater to your specific needs.

We offer devices which work on GSM networks or on dual-mode platform offering worldwide satellite and cellular connectivity for monitoring, tracking, and management of fixed and mobile assets around the world. Operating on the low-earth orbit (LEO) satellite network and GSM cellular quad-band network, the device offers Machine-to-Machine (M2M) communication with unlimited global coverage and no blockage in an extremely rugged design.

This device exceeds SAE J1455 specifications and is designed for reliable and continuous operation in the harshest, most challenging environments. Its low power consumption, simple asset integration and ease of custom programming make it ideal for a wide range of industrial applications such as transportation and heavy equipment tracking/monitoring and fixed asset monitoring.

These boxes also have can Bus connectivity to connect to the engine of the vehicle and report on speed, hard braking, fuel consumption, and a variety of different engine data points



- As a part of our implementation process we provide Training and Educational support to the Management and User team on the usage of the IRRIS® System.
- Training can be provided in local language upon request
- Installation support would be provided at any Customer Location around the Globe.
- After Sales Support will be provided from Muscat for any Installation across Oman.
- Bahwan CyberTek is in the process of setting up a Local Contact Center to enhance Customer Centricism

About Bahwan CyberTek and GeoDecisions

Bahwan CyberTek (BCT) is a global IT solutions leader in providing innovative software and services, with a state of art Centre of Excellence Center and employing more than 1200 consultants around the world. BCT brings proven experience and global resources to its customers with unique and cost effective approach. BCT is a SEI CMMi Level 5 Organization and is committed to deliver world-class solutions for its customers. BCT has received recognition and awards from industry groups such as Red Herring Asia 100 winner; Deloitte Fast 50 India and Fast 500 APAC. BCT was established in 1999 and has regional office in India, the Middle East and the United States.

GeoDecisions is a World Class Logistics Support organization based in the U.S. GeoDecisions is currently responsible for tracking the movement of a Million assets worldwide which includes The U.S. Army's total logistics program, the national emergency management system, as well as many Fortune 500 Oil and Gas, Utilities, and general distribution networks globally.

To Know More Contact:

Badrinath J
GSM: (968) 99104467
Tel: (968) 24567154 - 312
Email: badrinathj@bahwancybertek.com

Visit us at:

www.bahwancybertek.com
www.geodecisions.com

Together,
We truly believe in
evolving your Business